

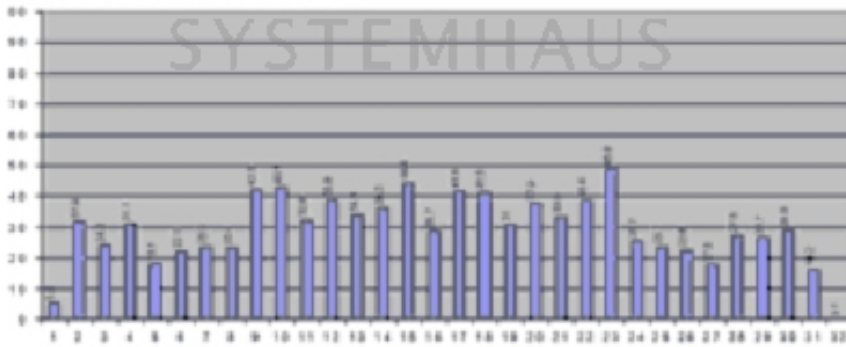
# InkZone Print

**BRAKENSIEK®**  
SYSTEMHAUS  
\_NAME\_0001  
\_S\_2002  
Colors: CYN, MAG, YEL, BLK



**BRAKENSIEK®**

Inkzone CYN / Total ink amount = 29.44%



## **Ink profile with InkZone Print**

As an alternative to writing the ink zone values to the respective printing machine manufacturer's data carrier, InkZone Print enables the values to be printed out on a laser or inkjet printer. The press operator presets the ink zones manually on the ink fountain using bar graphs, this using bar graphs containing the allocated numerical values. InkZone Print also allows precise calculation of the average ink consumption for each printing job, a function that can be crucial to any printing house where expensive inks are an important cost factor.

## **Supported Presses & Consoles**

This list does not claim to be complete. Please contact us or any of our distribution partners if you require more information. A detailed description of the supported presses and consoles can be obtained here as a PDF file.

Adast Sheetfed 547/557  
Adast Sheetfed Dominant 715/725/745/755  
Adast Sheetfed Dominant 826/846/856/866  
Akiyama Jprint/Bestech 26/28/29/32  
Akiyama Jprint/Bestech 40/44  
GMI Microcolor Sheetfed and Web press console  
Eltromat Sheetfed and Web press console  
Heidelberg Sheetfed Printmaster PM/GTO 52  
Heidelberg Sheetfed Printmaster PM /Speedmaster SM 52  
Heidelberg Sheetfed Speedmaster 72  
Heidelberg Sheetfed Printmaster PM/Speedmaster SM/CD 74  
Heidelberg Sheetfed Speedmaster SM/CD 102  
Heidelberg Sheetfed Speedmaster XL 105  
Heidelberg Web Presses (all Heidelberg Web Presses with CPC)  
KBA Sheetfed Rapida 74  
KBA Sheetfed Rapida 105  
KBA Sheetfed Rapida 130  
KBA Sheetfed Rapida 142  
KBA Sheetfed Rapida 162  
KBA Sheetfed Rapida 185  
KBA Sheetfed Rapida 205  
KBA Sheetfed and Web Logotronic  
Komori Sheetfed Lithrone 20/26/28  
Komori Sheetfed Lithrone 32  
Komori Sheetfed Lithrone 40/44  
Komori Sheetfed Lithrone 50  
MAN Sheetfed Roland 200  
MAN Sheetfed Roland 300  
MAN Sheetfed Roland 500  
MAN Sheetfed Roland 700  
MAN Sheetfed Roland 800  
MAN Sheetfed Roland 900/XXL  
MAN Sheetfed Roland Favorit  
MAN Sheetfed Roland Rekord  
MAN Roland Web RCI/Mavo/Pecom  
Miller Sheetfed (TBA)  
Mitsubishi Sheetfed Diamond 1000/2000/3000/5000/6000  
Mitsubishi Sheetfed 1x/2x/3x/4x/5x/6x  
Monigraf Sheetfed and Web press console

Planeta Sheetfed Varimat/Variant/Variomat 17/24/26/27/28  
Planeta Sheetfed Varimat/Variant/Variomat 33/36/37  
Planeta Sheetfed Varimat/Variant/Variomat 42/44/46/47/48  
Planeta Sheetfed Varimat/Variant/Variomat 50/54/55/56/57/58  
Planeta Sheetfed Varimat/Variant/Variomat 64/66/67/76/77  
Polly Sheetfed Performer 66  
Polly Sheetfed Prestige 74  
Ryobi Sheetfed 522/524/525/526  
Ryobi Sheetfed 684/685/686/688/6810  
Ryobi Sheetfed 754/755/756/758/7510  
Sakurai Sheetfed (TBA)  
Sinohara Sheetfed (TBA)  
TGC Grafitel Sheetfed and Web press console

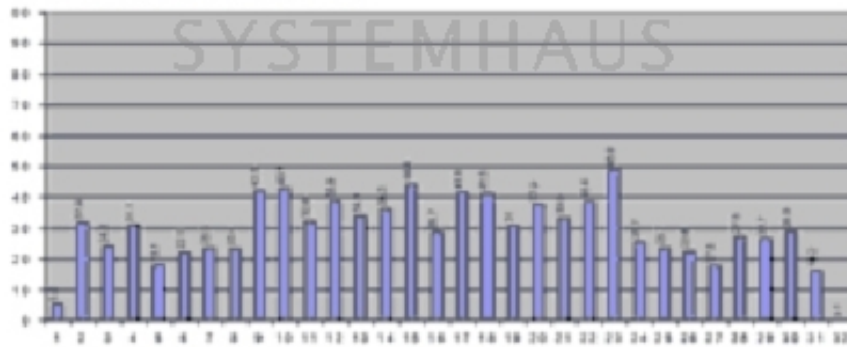
**BRAKENSIEK®**  
SYSTEMHAUS

# Inkzone

Jobname: FILE\_NAME\_0001  
Date: 01.05.2002  
Colors: CYN, MAG, YEL, BLK



Inkzone CYN / Total ink amount = 29.44%



Please only contact us via our registration form and only if you are a business person yourself. Every offer is subject to prior sale and includes your acceptance to our terms & conditions [Terms and conditions \(AGB\)](#). All logos and trademarks on this site are the property of their respective owners.

You will always receive an invoice including tax, which can be paid via wire transfer, in advance or cash. If you register on paypal, you may also pay by charging your paypal account with your credit card. If you are an EU member and you have a validated tax number which can be validated here: [VIES VAT number validation / MwSt.-Informationsaustauschsystem MIAS\) Validierung der MwSt.-Nummer](#) then you pay tax-free. If you are from outside the EU, you can only pay tax-free, if the export is done with the transport company, called 'Schenker'. If you are not using 'Schenker', we cannot guarantee that we will get the export confirmation in time. In that case, you have to pay tax and you get it.



**Brakensiek Systemhaus  
GmbH & Co. KG**  
**Klönnestraße 94**  
**D-44143 Dortmund**

**BRAKENSIEK®**  
**SYSTEMHAUS**



**[www.brakensiek.com](http://www.brakensiek.com)**

**Tim Brakensiek**



 **+49(0)231.985-00 10**



 **+49(0)231.985-2000**