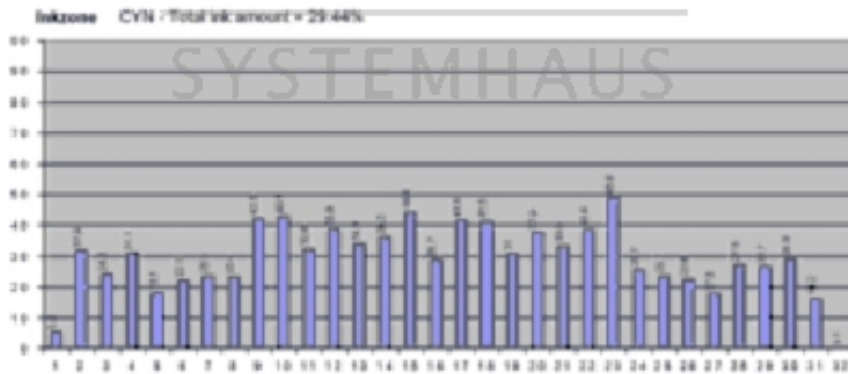


InkZone Print

BRAKENSIEK®
SYSTEMHAUS PAUSE_0001
→ 1.2002
Colors: CYN, MAG, YEL, BLK



Ink profile with InkZone Print

As an alternative to writing the ink zone values to the respective printing machine manufacturer's data carrier, InkZone Print enables the values to be printed out on a laser or inkjet printer. The press operator presets the ink zones manually on the ink fountain using bar graphs, this using bar graphs containing the allocated numerical values. InkZone Print also allows precise calculation of the average ink consumption for each printing job, a function that can be crucial to any printing house where expensive inks are an important cost factor.

Supported Presses & Consoles

This list does not claim to be complete. Please contact us or any of our distribution partners if you require more information. A detailed description of the supported presses and consoles can be obtained here as a PDF file.

Adast Sheetfed 547/557
Adast Sheetfed Dominant 715/725/745/755
Adast Sheetfed Dominant 826/846/856/866
Akiyama Jprint/Bestech 26/28/29/32
Akiyama Jprint/Bestech 40/44
GMI Microcolor Sheetfed and Web press console
Eltromat Sheetfed and Web press console
Heidelberg Sheetfed Printmaster PM/GTO 52
Heidelberg Sheetfed Printmaster PM /Speedmaster SM 52
Heidelberg Sheetfed Speedmaster 72
Heidelberg Sheetfed Printmaster PM/Speedmaster SM/CD 74
Heidelberg Sheetfed Speedmaster SM/CD 102
Heidelberg Sheetfed Speedmaster XL 105
Heidelberg Web Presses (all Heidelberg Web Presses with CPC)
KBA Sheetfed Rapida 74
KBA Sheetfed Rapida 105
KBA Sheetfed Rapida 130
KBA Sheetfed Rapida 142
KBA Sheetfed Rapida 162
KBA Sheetfed Rapida 185
KBA Sheetfed Rapida 205
KBA Sheetfed and Web Logotronic
Komori Sheetfed Lithrone 20/26/28
Komori Sheetfed Lithrone 32
Komori Sheetfed Lithrone 40/44
Komori Sheetfed Lithrone 50
MAN Sheetfed Roland 200
MAN Sheetfed Roland 300
MAN Sheetfed Roland 500
MAN Sheetfed Roland 700
MAN Sheetfed Roland 800
MAN Sheetfed Roland 900/XXL
MAN Sheetfed Roland Favorit
MAN Sheetfed Roland Rekord
MAN Roland Web RCI/Mavo/Pecom
Miller Sheetfed (TBA)
Mitsubishi Sheetfed Diamond 1000/2000/3000/5000/6000
Mitsubishi Sheetfed 1x/2x/3x/4x/5x/6x
Monigraf Sheetfed and Web press console

Planeta Sheetfed Varimat/Variant/Variomat 17/24/26/27/28
Planeta Sheetfed Varimat/Variant/Variomat 33/36/37
Planeta Sheetfed Varimat/Variant/Variomat 42/44/46/47/48
Planeta Sheetfed Varimat/Variant/Variomat 50/54/55/56/57/58
Planeta Sheetfed Varimat/Variant/Variomat 64/66/67/76/77
Polly Sheetfed Performer 66
Polly Sheetfed Prestige 74
Ryobi Sheetfed 522/524/525/526
Ryobi Sheetfed 684/685/686/688/6810
Ryobi Sheetfed 754/755/756/758/7510
Sakurai Sheetfed (TBA)
Sinohara Sheetfed (TBA)
TGC Grafitel Sheetfed and Web press console

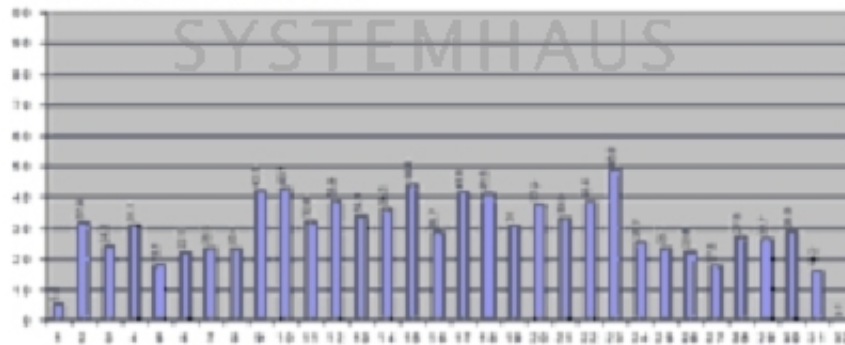
BRAKENSIEK®
SYSTEMHAUS

Inkzone

Jobname: FILE_NAME_0001
Date: 01.05.2002
Colors: CYN, MAG, YEL, BLK



Inkzone CYN / Total ink amount = 29.44%



Please only contact us via our registration form and only if you are a business person yourself. Every offer is subject to prior sale and includes your acceptance to our terms & conditions [Terms and conditions \(AGB\)](#). All logos and trademarks on this site are the property of their respective owners.

You will always receive an invoice including tax, which can be paid via wire transfer, in advance or cash. If you register on paypal, you may also pay by charging your paypal account with your credit card. If you are an EU member and you have a validated tax number which can be validated here: [VIES VAT number validation / MwSt.-Informationsaustauschsystem MIAS\) Validierung der MwSt.-Nummer](#) then you pay tax-free. If you are from outside the EU, you can only pay tax-free, if the export is done with the transport company, called 'Schenker'. If you are not using 'Schenker', we cannot guarantee that we will get the export confirmation in time. In that case, you have to pay tax and you get it.

Mitglied der

**Brakensiek Systemhaus
GmbH & Co. KG
Klönnestraße 94
D-44143 Dortmund****BRAKENSIEK®**
SYSTEMHAUS

Mitglied im

**www.brakensiek.com****Tim Brakensiek**

Mitglied des



+49(0)231.985-00 10

Premium Partner



+49(0)231.985-2000