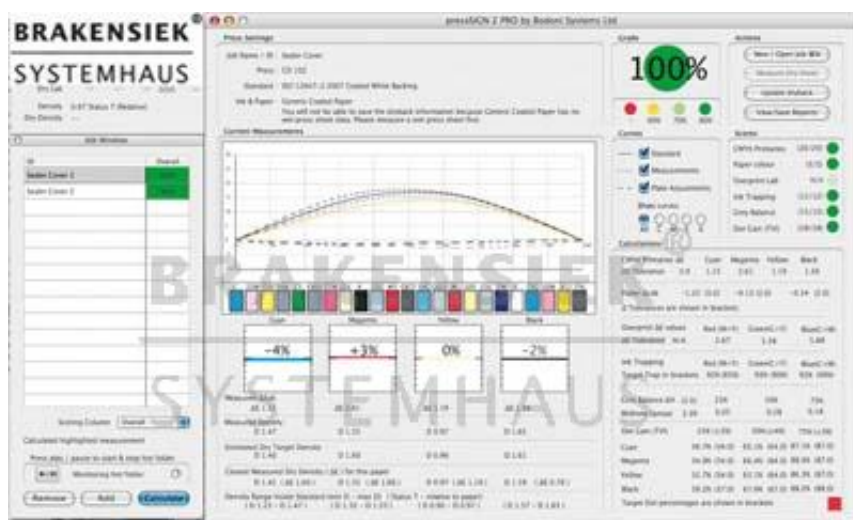


pressSIGN-Pro
automatic color
control on press



pressSIGN-pro. Automated color accuracy on press.

pressSIGN-pro automatically imports CGATS data from a number of auto-scanning devices like X-Rite's Intellitrax S, Heidelberg's ImageControl and Komori's PDCS, and shows the operator how to adjust density and the plate curve to meet the desired target.

pressSIGN-Pro is the most effective tool for matching any printing standard. Print to any international standard or create your own standard :-

- ISO 12647-2 sheet-fed or web offset
- ISO 12647-3 newsprint
- ISO 12647-4 gravure
- ISO 12647-6 flexographic
- Create your own standard by measuring an individual or set of press sheets (average these measurements).
- Import an ICC profile and make this your new standard
- Key in the target values to create a new standard

pressSIGN - Five easy steps to accurate colour

- use the pressSIGN control strip in place of your standard color bar
- read the color bar with your auto-scanning device and adjust the densities as suggested by pressSIGN
- read the control strip when dry and update the dry back calculations
- adjust the plate curve as recommended by pressSIGN
- run the next job with the pressSIGN settings and you'll have consistently accurate colour

More about pressSIGN-Pro

- test for ISO 12647-2, 12647-3, GARCoi G7 & SWOP compatibility
- receive detailed pdf reports and label print output
- traffic light scoring system
- average readings from one or more jobs to get an overall score.
- compare print quality throughout the run
- generate your own standards based on previous jobs or typing in your own values.

pressSIGN-PrintBuyer meets all your measurement needs

- CIE L*a*b* values for CMYK & spot colours
- Density values for CMYK & spot colours
- Dot Gain (Tonal Value Increase - TVI) for CMYK & spot colours
- Grey Balance
- Overprint values
- Ink Trapping
- Paper Colour

Choose the correct standard

Select different international printing standards according to the type of press, the type of paper and the appropriate dot gain curve. Make sure your job is printed according to your needs.

pressSIGN-Pro also allows you to set your own standards. You can set your own standard based on measurements or by typing in target values for the primaries and dot gain etc. Setting your own standard based on measurements is easy. Just measure one or more sheets which can then be averaged or import data from another user or previous job(s) and save this as your new standard. Export this standard to your printer and he can then print to your exact settings.

pressSIGN-Pro version gives printers a step by step guide to accurate printing

pressSIGN-Pro enables printers to reach the required standard quickly and easily

pressSIGN-Pro reads spectral information from the sheet and suggests the correct density adjustment, making it easy for the printer to get to the right settings quickly.

Setting the right dot gain curve can be difficult. pressSIGN-Pro provides the tools to set the correct dot gain curve quickly and easily.

Complete set of measurements in seconds

When you have read the color bar you'll receive an instant report on all aspects of the press sheet. The speed of operation makes it easy to read and check all your print jobs. You can output this report as a pdf or a simple label you can attach to the print job.

pressSIGN-Pro also works in conjunction with the GretagMacbeth Eye-One Pro spectrophotometer and allows individual patches to be measured.

You can make individual measurements from anywhere on the press sheet. You may want to compare values for consistency or even compare spot colours against a Pantone guide or a value you have taken from Adobe's Photoshop. You can test for Lab values, density values and dot area.

pressSIGN turns the Eye-One into complete press measurement tool.

Measure the Lab value, density and dot area and compare it with other readings either from the press sheet or your Pantone book, or the proof . Set pressSIGN to check the DeltaE or Dot Area of the CMYK primaries or compare the Lab values/Dot area of secondary colours or spot colours. You can even type in a Lab value, which you might have taken from Adobe PhotoShop, and compare this with the colour on the press sheet.

Automatically save all readings to a folder.

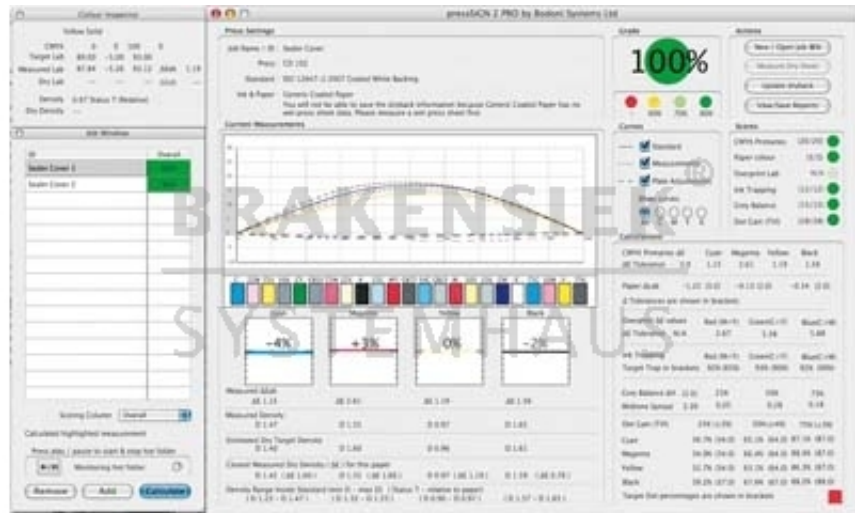
Import previous readings from one or more jobs. This allows you to average plate curves from different presses, so reducing the number of plate queues required.

Average the readings.

Sort the readings according any of the criteria measured. For example, select only the measurements that have a 100% pass for the primaries in order to only use this data to create the dot gain information to export to the RIP.

Create a standard based on one or more readings. This feature allows you to print a job which is outside any international standard, measure the results and make this measurement the basis for your own standard.

Create your own standard by keying in the values you require. Input the Lab values for the primaries, dot gain and other criteria based on your specific needs.



Please only contact us via our registration form and only if you are a business person yourself. Every offer is subject to prior sale and includes your acceptance to our terms & conditions [Terms and conditions \(AGB\)](#). All logos and trademarks on this site are the property of their respective owners.

You will always receive an invoice including tax, which can be paid via wire transfer, in advance or cash. If you register on paypal, you may also pay by charging your paypal account with your credit card. If you are an EU member and you have a validated tax number which can be validated here: [VIES VAT number validation / MwSt.-Informationsaustauschsystem MIAS\) Validierung der MWSt.-Nummer](#) then you pay tax-free. If you are from outside the EU, you can only pay tax-free, if the export is done with the transport company, called 'Schenker'. If you are not using 'Schenker', we cannot guarantee that we will get the export confirmation in time. In that case, you have to pay tax and you get it.



**Brakensiek Systemhaus
GmbH & Co. KG**
Klönnestraße 94
D-44143 Dortmund

BRAKENSIEK®
SYSTEMHAUS



www.brakensiek.com

Tim Brakensiek



 **+49(0)231.985-00 10**



 **+49(0)231.985-2000**