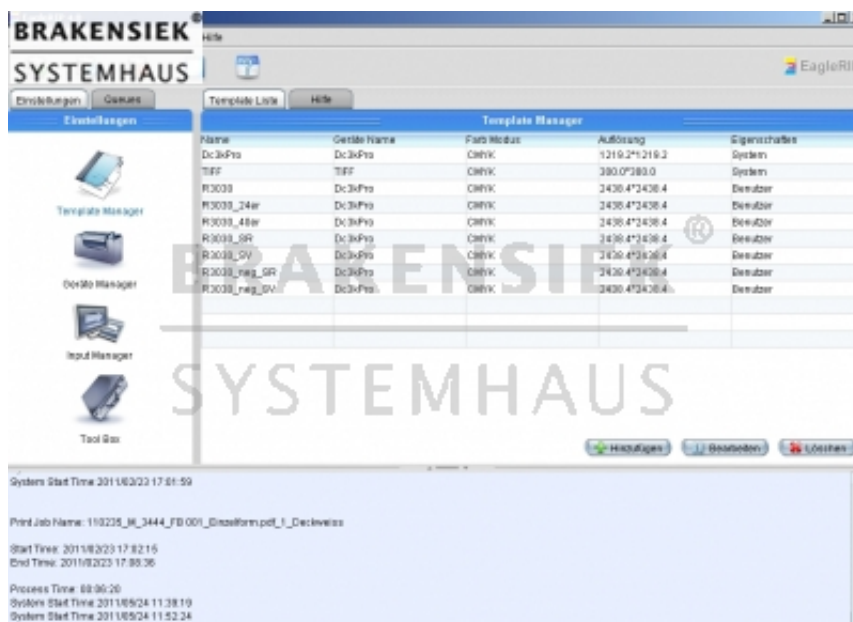


# Founder RIP/EAGLE RIP Linotype (TAXI) LTC830/930, R3020PS/R3030PS



## **Linotype (TAXI) LTC830/930, R3020PS/R3030PS**

### **Rip incl. Interfacekarte, Kabel, CDROM, Dongle**

EagleRIP  
PDF 1.7-PostScript 3  
Version 4.3  
Released in March 2010

- (1) Update to the latest RIP kernel, support Adobe CS4.
- (2) Support Windows 2008 and Windows 7 (only for TIFF driver and Winprint driver).
- (3) Change optional screening EagleAM Round and EagleAM Pureround (7.5 offset screening) to be standard screening.
- (4) Add DS\_PTR.drv, support Screen PlateRite series devices (Platerite 4000/4100/4300/8000/8100/8600/16000, but we only have physically connected on 4000 and 4100)
- (5) Update Fjluxel driver, fix the problem of mirror and margin.
- (6) Update Ecrm SCSI driver, fix the problem of driving Ecrm Mako imagesetter.

#### **1. PostScript 3 and PDF 1.7 RIP with PDF native interpreter**

Supports PDF 1.7 document features including transparency, embedded ICC Profiles, 128-bit encryption, JPEG2000 filter etc.

#### **2. Supports over 100 CTP, CTF, digital proofer and laser printer devices**

#### **3. TIFF 1-bit output**

- Productive ROOM (Rip Once, Output Many) solution accepted by digital proofing, CTF and CTP workflow solutions.
- Driver can generate 1-bit TIFF file with no compress and CCITT GROUP4, or 8-bit TIFF file with no compress, LZW and Packbits.

#### **4. Fast and flexible screen preview and dot preview**

#### **5. Built-in automatic ganging and manual ganging**

#### **6. Screening**

9 built-in screen shapes: Euclidean Round, Rhomb, Ellipse, Diamond, Pure Round, Sharp Ellipse, Square, Cross and FM screening.

Optional Screenings:

EagleFM: Second-order FM Screening technology using variable dot size and variable spacing, controls the randomness of dots.

EagleAM: Supports 2400dpi/2540/3657dpi, Round and Pure Round dot shapes. Adopts new screening technology, plus or minus 7.5 degrees based on previous angle.

EagleFAM: Supports hybrid FM/AM Screening. Uses EagleAM screening in midtones and adopts FM Screening in highlights and shadows.

EagleAGS: Accurate Gravure Screening, designed especially to improve the quality of gravure printing.

#### **7. Supports TrueType and CID font and better performance of Asian fonts**

#### **8. Flexible network printing: NT Pipe, Apple Talk & Hot Folder**

9. Optional CIP3 output plug in enables to produce PPF file which reduce make-ready times and wastage.

10. Optional the third party PDF trapping

11. Tiffflow plugin for 1 bit TIFF PostRIP imposition workflow solution

12. SDK (Software Developer's Kit) available for OEMs

enthält: 1 Interface Board für Linotype Hell/Heidelberg R3030PS Belichter

**Type:** IBM ThinkCentre A50 8085-75G

contains: 1 Speedway card

### **Description of the manufacturer:**

The ThinkCentre A50 systems with a unique range of services. The leading technology and the abundance of USB ports make it extremely fast access to peripheral devices. The models of the ThinkCentre A50 have a common system board and a single software image, creating a superb manageability is guaranteed. The technology also enables IBM to lead to lower total cost of PC hardware and software and operating systems can be upgraded easily - and all for one low price!

### **Form Factor:** Tower

Width: 19.1 cm

Depth: 40.6 cm

Height: 41.3 cm

Weight: 10.2 kg

Color: black

CPU: Intel Pentium 4 3 GHz with HT Technology

Hard drive: 40 GB IDE

### **Memory:**

2 GB / 4 GB (max) DDR SDRAM PC2700 333 MHz DIMM 184-PIN

### **Drives:**

DVD-Rom

### **Floppy drive:**

internal floppy disk drive 3.5"1.44MB

### **Graphics:**

Intel 865G Video Memory (UMA) AGP 8x - integrated

### **Sound:**

IBM Soundmax Integrated Digital Audio

IDE / SCSI / RAID controller: 1 x IDE ATA-100 Controller

Network: Intel PRO 10/100 Network Connection

Power Supply: 1 x 230 Watt

**Expansion Bays:**

2 x front accessible - 5.25 "x 1/2H

2 x front accessible - 3.5 "x 1/3H

1 x internal - 3.5 "x 1/3H

**Expansion Slots Total:**

1 x AGP 8x - three-quarter length, full height

4 x memory - DIMM 184-PIN

1 x processor - Socket 478

3 x PCI - three-quarter length, full height

**Interface:**

6 x Hi-Speed USB 2.0 - USB Type A, 4-pin

1 x parallel - IEEE 1284 (EPP / ECP) - D-Sub (DB-25), 25-pin

1 x serial - RS-232 - D-Sub (DB-9), 9-pin

1 x keyboard - generic - Mini-DIN (PS / 2 style), 6-pin

1 x mouse - generic - Mini-DIN (PS / 2 style), 6-pin

1 x display / video - VGA - HD D-Sub (HD-15), 15-pin

1 x network - Ethernet 10Base-T/100Base-TX - RJ-45

1 x audio - line-In - mini-phone stereo 3.5 mm

1 x Audio - line-out/headphones - Mini-phone stereo 3.5 mm

1 x microphone - input - mini-phone 3.5 mm

**Special Features:**

Security lock slot (cable lock sold separately), administrator password, power-on password, boot without keyboard or mouse, diskette I / O control, hard drive I / O control, I / O control, parallel port I / O control, serial port, U -Bolt anchoring, boot sequence



Please only contact us via our registration form and only if you are a business person yourself. Every offer is subject to prior sale and includes your acceptance to our terms & conditions [Terms and conditions \(AGB\)](#). All logos and trademarks on this site are the property of their respective owners.

You will always receive an invoice including tax, which can be paid via wire transfer, in advance or cash. If you register on paypal, you may also pay by charging your paypal account with your credit card. If you are an EU member and you have a validated tax number which can be validated here: [VIES VAT number validation / MwSt.-Informationsaustauschsystem MIAS\) Validierung der MWSt.-Nummer](#) then you pay tax-free. If you are from outside the EU, you can only pay tax-free, if the export is done with the transport company, called 'Schenker'. If you are not using 'Schenker', we cannot guarantee that we will get the export confirmation in time. In that case, you have to pay tax and you get it.



**Brakensiek Systemhaus  
GmbH & Co. KG  
Klönnestraße 94  
D-44143 Dortmund**

**[www.brakensiek.com](http://www.brakensiek.com)**

 **+49(0)231.985-00 10**

 **+49(0)231.985-2000**

**BRAKENSIEK®**  
**SYSTEMHAUS**

**Tim Brakensiek**